

Return to Work Commute Planning

HELPING EMPLOYEES WITH THEIR RETURN TO THE WORKPLACE

WHEN *YOU'RE* READY, WE'RE READY


own your commute
1-888-819-6110

COMMUTE
with 



COMMUTE WITH ENTERPRISE

OVERVIEW

OVER 11,000+VANPOOLS

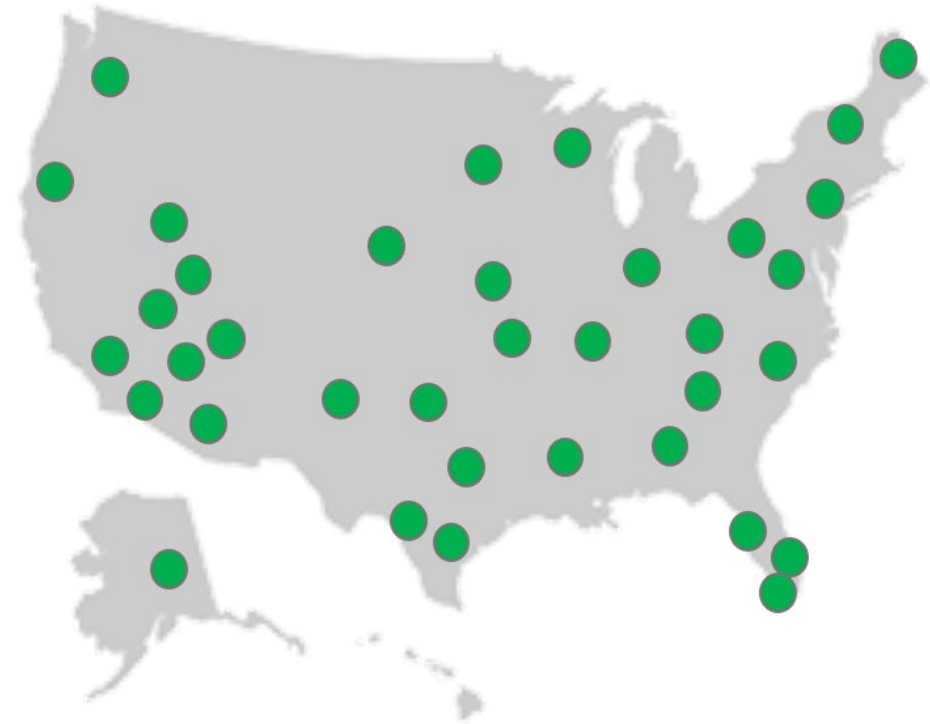
Removing 67,000 vehicles off the road and parking lots

OPERATING IN 45 STATES

With local support and dedicated account management

ELIMINATE 1.4 B COMMUTER MILES

Reduce more than 1.1 billion pounds of carbon emissions annually.



Commuting Matters to your Business

PROSPECTIVE EMPLOYEES

Commuting is the **second-most important factor** when applying for a job*

58% of job seekers consider a company's social and environmental commitments when searching for a job**

CURRENT EMPLOYEES

The commute is the **second-most important factor** in job satisfaction***

23% of employees have left a job because of a bad commute****

BUSINESS & COMMUNITY

Longer commutes associated with higher absenteeism*****

The average passenger vehicle emits **4.6 metric tons** of carbon dioxide per year*****

What is the Southwestern Pennsylvania Commission and CommuteInfo Program



- Southwestern Pennsylvania Commission (MPO)
- SPC directs the use of State and Federal Transportation funds for the 10 County region

- Customer-Focused Resource Center
- Coordinates the region's vanpooling, carpooling, and ridesharing programs
- Registering is QUICK and EASY
- Connecting regional communities through healthy, sustainable and effective efforts

An advertisement for the 'OWN YOUR COMMUTE' program. It features a background image of a man and a woman in a car. Overlaid on this is a green rectangular box with white text. The text reads: 'OWN YOUR COMMUTE', 'Looking for a better way to own your commute? You're in the right place. From transit to carpooling, vanpooling to biking, we can provide the information and resources you need to choose the right route for you.', and a white button with the text 'SEND ME MY COMMUTE OPTIONS >>'.

OWN YOUR COMMUTE

Looking for a better way to own your commute? You're in the right place. From transit to carpooling, vanpooling to biking, we can provide the information and resources you need to choose the right route for you.

[SEND ME MY COMMUTE OPTIONS >>](#)

**Register
Your
Carpool
Today!**

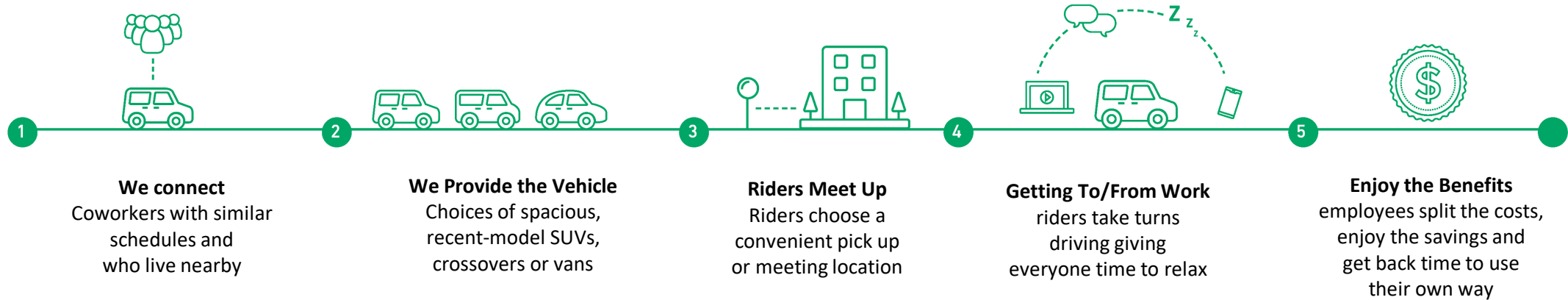


Carpooling

- Two or more people
- Privately owned vehicle
- Ride with:
 - Friends
 - Family
 - Neighbors
 - Co-workers

- Set own rules:
 - Who drives and when
 - Costs
 - Seating, music, etc.
 - Emergency Ride Home Programs
 - Emergency Roadside Kit
 - **ALREADY CARPOOLING?**

Our Commute Solution



What is included:

- ✓ Recent-Model SUV, crossover or van with optional amenities, like WiFi
- ✓ 24/7 roadside assistance
- ✓ Preventative maintenance
- ✓ Comprehensive physical and liability insurance
- ✓ Month-to-month flexibility
- ✓ Guaranteed Ride Home Program

Commute Control Plans

Listed below are examples of how Vanpooling has helped our partners decrease the spread of COVID and lower impact to their workplace;



Screening Employees prior to entering Vanpool



Mandating PPE such as Mask while Riding



Ensuring Social Distancing by limiting Ridership



Providing Cleaning Car Kits & Suggesting Cadence of cleaning with each Vanpool



TAKE CONTROL. TAKE THE PLEDGE.

It's your vanpool and your rules. Take control of your safety and pledge to clean your Commuter vehicle every single day. Take turns, and follow this best practice checklist, compiled from recommendations by a variety of health authorities. And keep your COMPLETE CLEAN kit stocked with the necessary supplies.

Daily Disinfect:

- ✓ Key and key fob
- ✓ Center console
- ✓ Cupholders & compartments
- ✓ Seat surfaces & pockets
- ✓ Areas between seat/console and seat/doorjamb
- ✓ Dashboard
- ✓ Instrument panels
- ✓ Steering wheel & column
- ✓ Accessory panel
- ✓ Door interiors & pockets
- ✓ Door handles (interior and exterior)
- ✓ Mirrors
- ✓ And other high-touch areas

©2020 Enterprise Rent-A-Car #03839 4:20 AM

Other Great Benefits.....



- 12 & 15 Passenger Vans = \$600/vehicle/month
- 7 Passenger Minivan = \$300/vehicle/month
- 7 Passenger SUV = \$200/vehicle/month
- Emergency Ride Home Program for all registered vanpools.
- Emergency Roadside Kit

FINANCIAL CONSIDERATIONS



15 PASSENGER VAN

Monthly Cost	SPC/Commuter info Subsidy	Actual Monthly Cost	Cost / Employee Per Month
\$1,079	\$600	\$479	\$32

12 PASSENGER VAN

Monthly Cost	SPC/Commuter info Subsidy	Actual Monthly Cost	Cost / Employee Per Month
\$1,079	\$600	\$479	\$32

7 PASSENGER SUV

Monthly Cost	SPC/Commuter info Subsidy	Actual Monthly Cost	Cost / Employee Per Month
\$1,104	\$200	\$904	\$129

7 PASSENGER VAN

Monthly Cost	SPC/Commuter info Subsidy	Actual Monthly Cost	Cost / Employee Per Month
\$1,230	\$300	\$930	\$132

\$100/MONTH PER 500 MILES ADDITIONAL



*Assumes full occupancy

**Rates are exclusive of taxes, fees, surcharges and other optional products that may be included in the delivery of the service to Eligible Renters.

***Fuel is not included in the rates.

FORECASTING THE POTENTIAL



of Employees at Targeted Location(s):

8,000



Potential Vanpoolers:

800



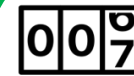
Potential Vans:

89



Potential Parking Spaces Reduced:

711



Potential Commuter Miles Saved

Annually:
16,391,849



Potential CO2 Reduction in LBs

Annually:
12,641,316



Potential Annual Commuter Savings vs. Driving Alone:

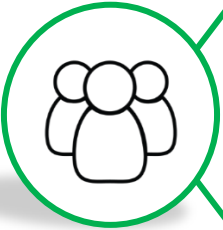
\$7,768,282

STATE OF THE BUSINESS & IMPACTS: Q2 2021



Current Vanpools:

1



Current Vanpoolers:

9



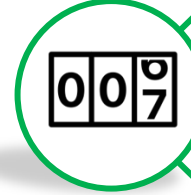
Seat Occupancy:

60.%



Parking Spots Reduced:

8



Q2 Commuter Miles Saved:

61,480



Q2 CO2 Reduction in LBS:

47,698



Q2 Commuter Savings vs Driving Alone:

\$28,657

IMPACT TO YOUR EMPLOYEES



Savings vs. Driving Alone:



\$809 Per Month

\$9,710 Per Year

Usable Time Back for Riders:



53 Hours Per Month

637 Hours Per Year

Miles Reduced on Personal Car:



1,921 Miles Per Month

23,055 Miles Per Year



Bill Whiteside
Commuting Consultant
william.whiteside@ehi.com
717-725-5406

Eric Docherty
Commute Branch Manager
Eric.t.Docherty@ehi.com
412-417-9110